



Technical Committee Report to the General Assembly – April 2010

1. Workbench related Work items

a) Translation

Development is progressing to plan, with the first release due on 2nd April.

The first translation steering group meeting took place on 3rd February, at which:

- An outline of the translation modules was described.
- The project scope and milestone timelines were presented.
- Initial planning took place for the half day Translation Tooling Development Working Group workshop in Copenhagen.

The second steering group took place on 3rd March, at which:

- A general project update was given
- Setup of a collaborative area on the IHTSDO Workspace for project members and the steering group was discussed.
- Plans for the 2nd April release were discussed.

Face to face meetings have also been held with Sweden and Denmark to discuss the planned functionality.

Additional functionality to link other terminology maintenance systems with the Workbench (via RF1 release files) is also planned. Design work is in progress.

b) Migration of International Release to the Workbench

Discussions are in progress with CAP and Informatics to put in place agreements, prior to starting development work in March. Both these agreements are now close to signature.

An Agreement with CAP, covering the required implementation work should also be in place during March.

It is planned that migration of authoring to the Workbench will take place immediately following the July 2011 release.

c) RefSet maintenance project

Two releases including reference set functionality were made to the International team during February.



A general release including the reference set functionality is likely to be available in April dependent on availability of reference set functionality, and validation of this functionality by the testing team.

Two further phases of project work will be performed, the first covering production of a browser for SMEs (subject matter experts), and the second integration with UK-specific tooling. Neither of these developments will impact the March general release.

A webinar has been given (to approximately 70 attendees), covering the new subset and reference set maintenance functionality available within the Workbench. This tutorial will be available on the IHTSDO site within the week.

d) Mapping tooling support

Prototyping work has now completed, and the scope of development is reported to have almost been agreed. Following that, a milestone delivery plan will be agreed with the mapping SIG.

e) Next Member release of Workbench

A new Workbench general release is planned for Members in April 2010, dependent on availability of reference set functionality, and validation of this functionality by the testing team.

This new release will include both the stated view and inferred view, classification, as well as reference set functionality. It will be a standalone release, not linked to a Collabnet central repository.

2. Roadmap and Architecture

a) Workbench development Standards and Procedures

DRAFT Development procedures have been posted to the Technical Committee site, and are under active review by NEHTA and UKTC. It is planned to put these new procedures in force over the next two weeks.

b) Workbench Function Architecture and Roadmap document

A Technical Roadmap has been posted to the Technical Committee site and made available to the MB for review.

3. Other Work items

a) ICD10 Mapping (JC)



Progress is being made on revising the Technical document and developing a central glossary, pending formal agreements with WHO.

b) Technical Implementation Guide (TIG) update

Work is progressing to plan on development of the TIG. The first deliverable (an outline for the TIG), is now in final review.

The first editorial board met on 22nd February. The following was discussed:

- Scope of the project, and delivery timelines.
- How to provide feedback during the review phases.
- A walkthrough of the outline for the TIG.

c) RF2 and File naming conventions

An RF2 technology preview was included with the January 2010 release as planned.

The first full RF2 release will be included with the July 2010 release. It is also planned that January 2011 will be the last release with both the RF1 and RF2 formats and that in July 2011 only RF2 will be rolled out.

d) Namespace policy

The Technical Committee has now taken ownership of the Namespace policy.

e) MRCM – reallocation of responsibilities

As the first phase of the MRCM project draws to a close, an assessment of the remaining work has been performed, and this has been allocated as follows:

- 1) Ongoing maintenance of the rules for the concept model: Oversight by Content Committee, actual work by Chief Terminologist and support staff.
- 2) Implementation of concept model rules in the new workbench: Oversight by the Technical Committee, actual work being performed within the migration project.
- 3) Examining and keeping in touch with Logical Record Architecture work (binding of terminology to the information model): Oversight by the I&I committee, and a “watching brief” for 2010 by the MRCM project group,
- 4) Expression of post-coordination constraints – similar to (1) but focused on the special needs of post-coordination: Oversight by the Content Committee, actual work by a project group.



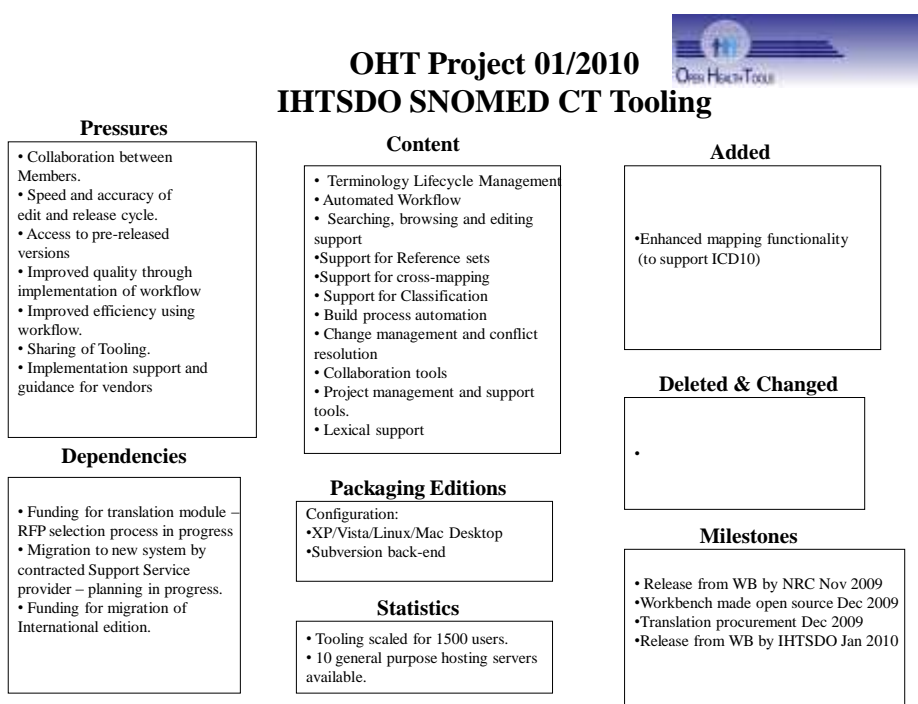
4. Update from relevant Harmonisation Activities

a) HL7

HL7 are currently reviewing two draft project submissions. These have been posted to the Technical Committee site for review.

The project summaries are as follows:

- **Content Submission:** This project will be a jointly developed policy between HL7 and the IHTSDO to develop a policy and process whereby HL7 members can develop, vet, package and submit internationally scoped SNOMED-CT content change requests to IHTSDO.
- **Workbench evaluation:** Perform an evaluation and mapping (technical alignment) between the workbench information model and the HL7 vocabulary model, as implemented in the MIF to identify how the vocabulary artefacts in the MIF can be modelled in the workbench. This will provide a mechanism of gaining the knowledge to plan moving forward with the workbench.





Major Dates and Deliverables IHTSDO SNOMED CT Tooling



01/2010

